



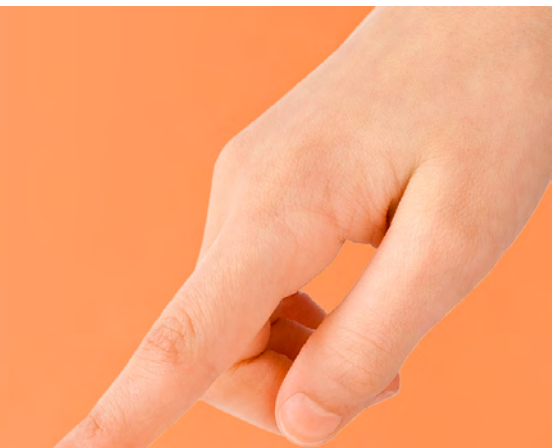
# Interactive Collection.

PRODUCT CATALOG 2020

**OUTFORM™**

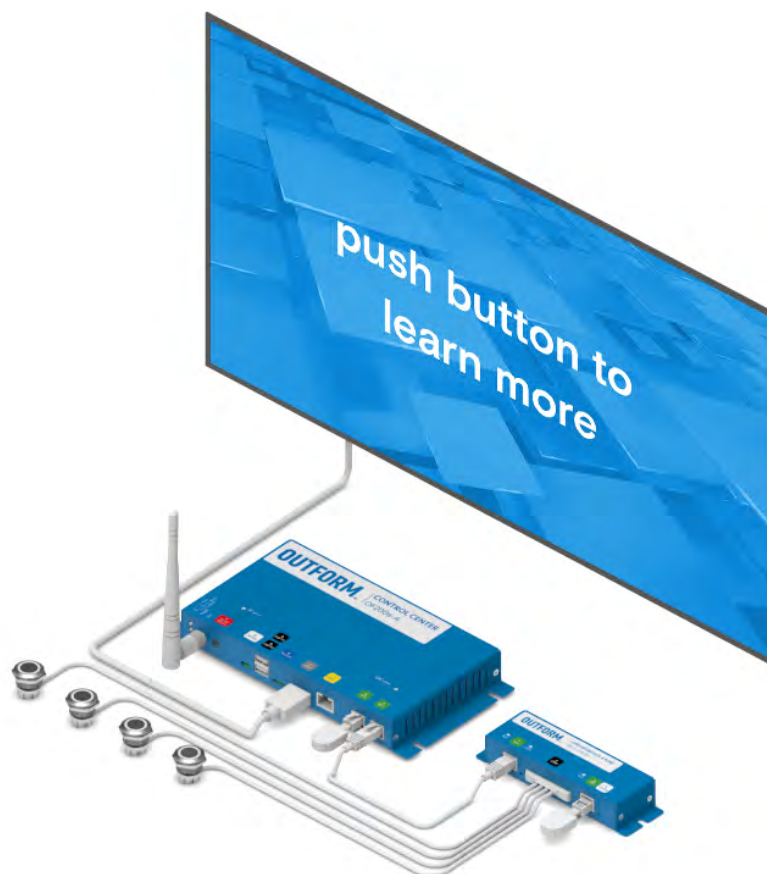
©2020 OUTFORM™ All RIGHTS RESERVED.

# BUTTONS EXPERIENCE



## ILLUMINATED, AND NON-ILLUMINATED BUTTONS

With options for illuminated, or non-illuminated buttons, this experience instantly pulls shoppers into a responsive interaction where they are given the freedom to make selections, and create a personalized shopping experience.





# BUTTONS EXPERIENCE

## GPIO

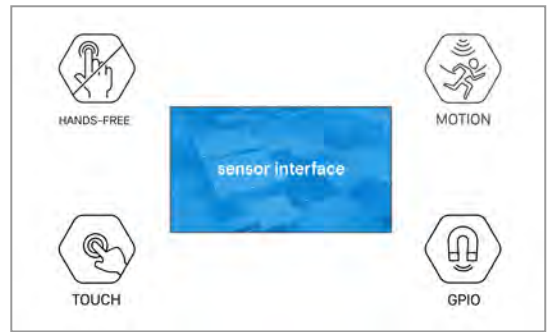
The OSM GPIO delivers flexible interface to control your retail display with multiple applications by providing many sensor inputs and signal outputs. Available in 4 port and 8 port versions and infinitely programmable, the GPIO supports most of the triggers and sensors used in today's retail environments.

## 2 BUTTON OPTIONS

Options for illuminated, and non-illuminated button experiences.

## MODULAR

The Interactive Collection is comprised of a variety of Outform Standard Modules (OSM) which communicate by way of ODC protocol. ODC protocol enables a dynamic eco-system by which multiple OSMs can interact and trigger relevant experiences.



## INTERACTIVITY

By combining this experience with different sensors and triggers, this experience can support a combination of user interactions such as touch, voice, motion, and many more.



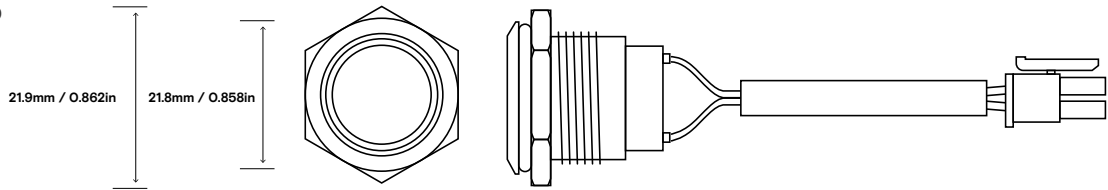
## OIE

Outform Interactive Editor gives you the tools to create your own experiences with ease using Control Center configuration

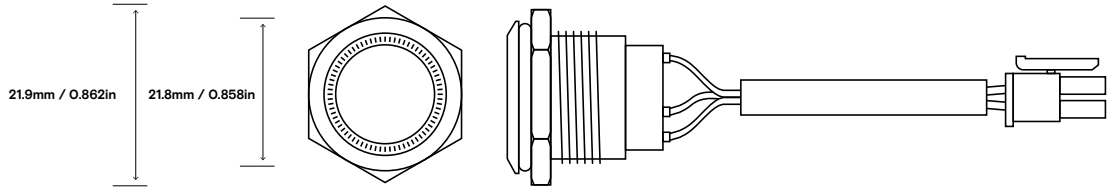


## PRODUCT SIZE

NON ILLUMINATED  
BUTTON



ILLUMINATED  
BUTTON



### PORT QUANTITY

#### INPUT MODES

DIGITAL PULL UP

BUTTON

ANALOG

#### OUTPUT MODES

DIGITAL PUSH/ PULL

DIGITAL OPEN COLLECTOR

PWM

### MAX INPUT VOLTAGE

3.6V

### POWER GPIO PORT

OUTPUT VOLTAGE: 5V

MAX SOURCE CURRENT: 0.5A

### ODC BUS (CONTROL BUS)

PORT QUANTITY:2

INPUT VOLTAGE RANGE: 10-20V

MAX CURRENT THROUGH ODC PORTS: 1.85A

### ESD PROTECTION

ALL PORTS: HBM 2KV; CDM 500V



## FAQ

### **HOW MANY BUTTONS CAN BE ADDED TO AN EXPERIENCE?**

As many as needed.

### **IS THERE A LIMITATION TO THE NUMBER OF BUTTONS ON A SINGLE GPIO INTERFACE?**

Up to 4 illuminated buttons and up to 8 non-illuminated buttons.

### **CAN THE COLOR OF THE ILLUMINATED LED BE CUSTOMIZED**

Yes, the color can be customized.



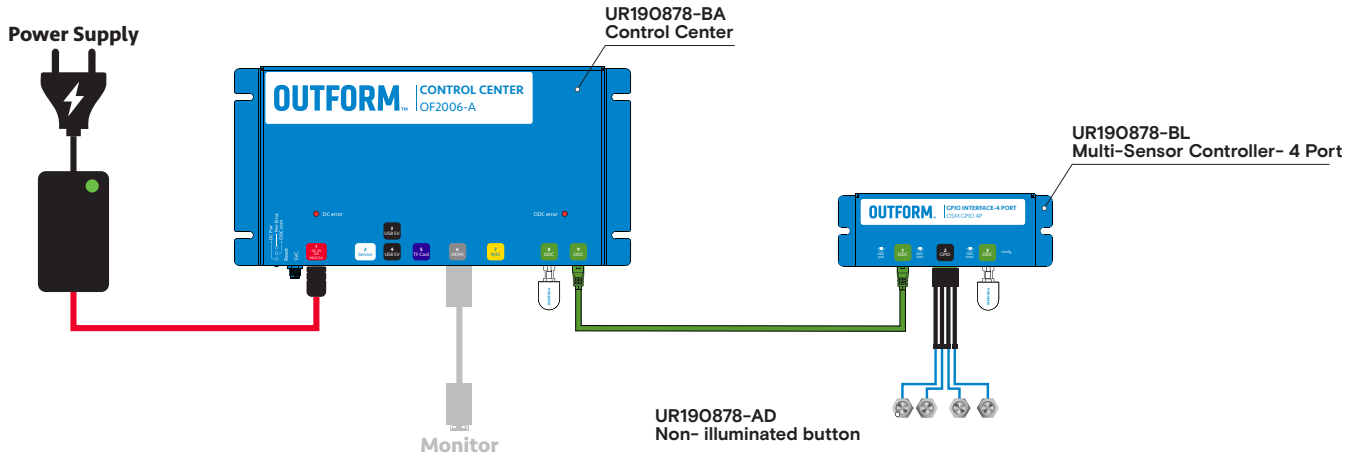
## NON-ILLUMINATED BUTTONS

UIC6001-01

Give shoppers a responsive interaction where they are given the freedom to make selections.

[Click here](#) to watch the system build tutorial.

[Click here](#) to watch the OIE build tutorial.



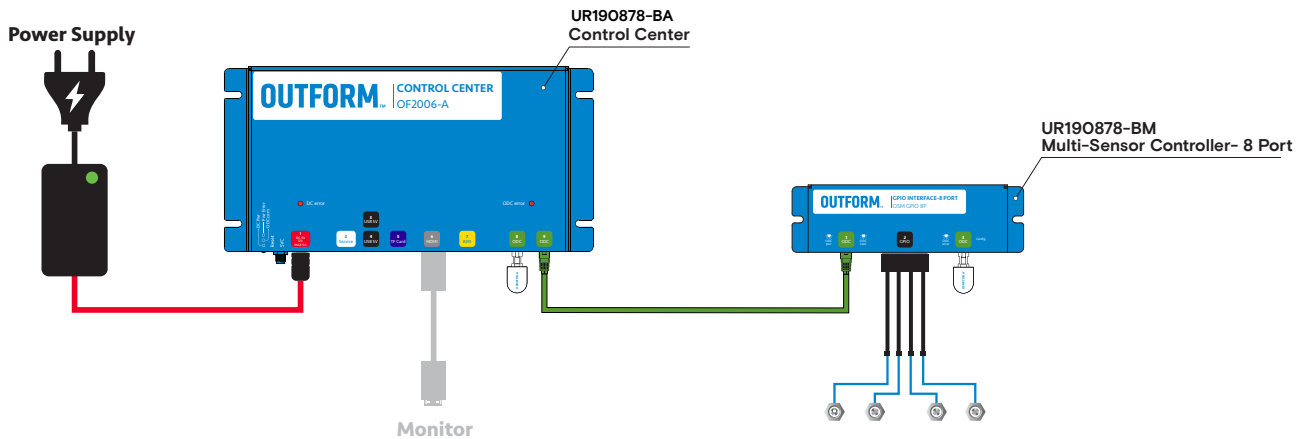
## ILLUMINATED BUTTONS

UIC6002-01

Add illumination to create an exciting experience where shoppers are given the freedom to make selections.

[Click here](#) to watch the system build tutorial.

[Click here](#) to watch the OIE build tutorial.



- AC CABLE
- 12V DC CABLE
- ODC RJ25 CABLE
- AUDIO CABLE
- USB CABLE
- HDMI CABLE
- GPIO CABLE
- RFID CABLE



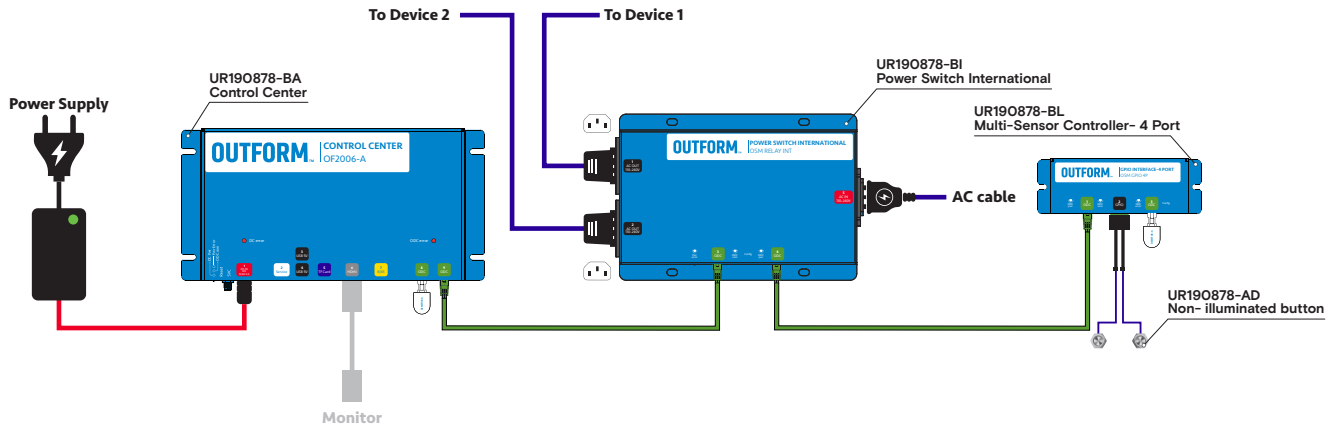
## NON-ILLUMINATED BUTTONS + POWER SWITCH CONTROLLER

UIC6005-01

Use buttons to power on and off devices.

[Click here](#) to watch the system build tutorial.

[Click here](#) to watch the OIE build tutorial.



- |                |            |
|----------------|------------|
| AC CABLE       | USB CABLE  |
| 12V DC CABLE   | HDMI CABLE |
| ODC RJ25 CABLE | GPIO CABLE |
| AUDIO CABLE    | RFID CABLE |